

# Leeds City Region Employment & Skills

Sue Cooke  
Project Director

WYLLN 'Raise Your Voice' Event  
19<sup>th</sup> March 2010

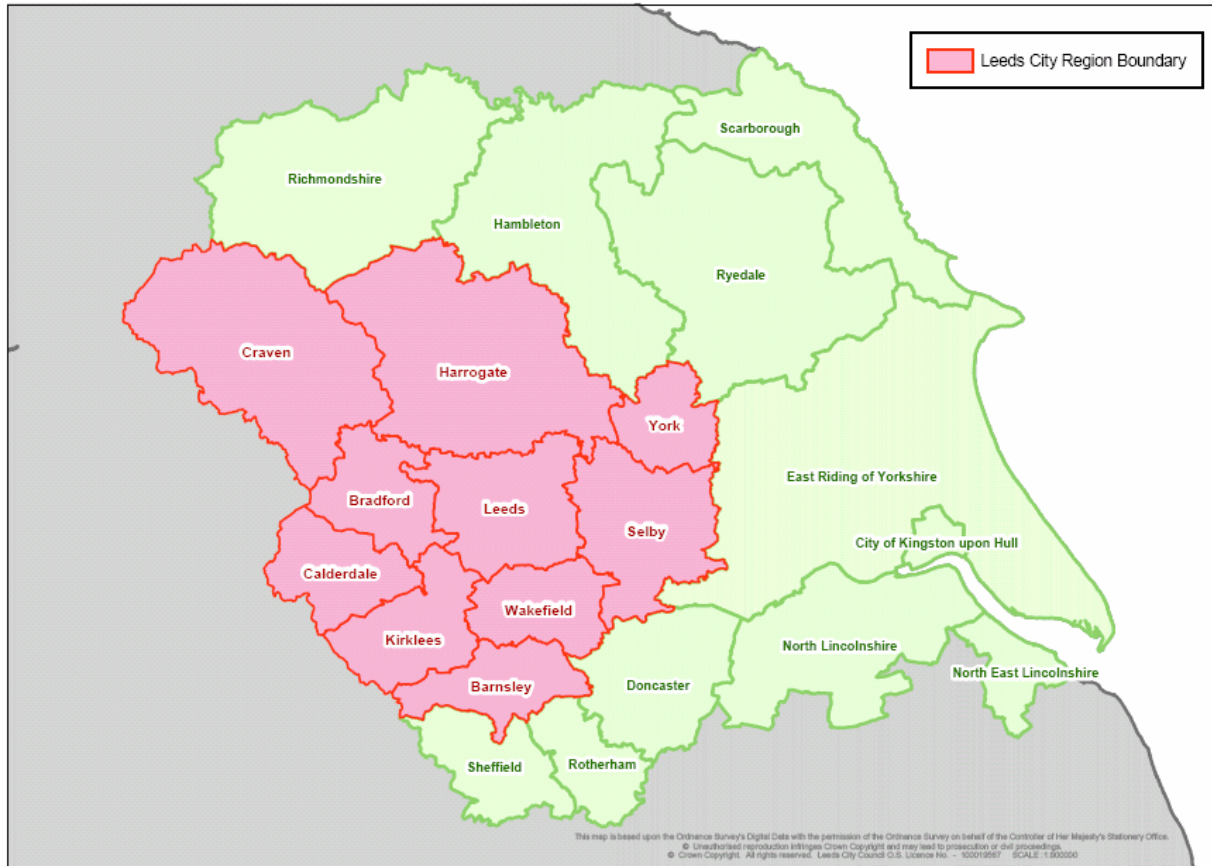


# Outline

- Leeds City Region
- New Employment & Skills Board (ESB)
- Employment & Skills Strategy
- Next Steps: Consultation and Communication



# The Geography



- Calderdale
- Kirklees
- Bradford
- Wakefield
- Leeds
- Craven
- Harrogate
- York
- Selby
- Barnsley
- (North Yorkshire)



leeds city region  
intelligence driving growth

intelligence driving growth

# The Leeds City Region



Functional Economic Area

95% self sufficiency

3m population

100,000+ businesses

£50 billion economy

5% of UK GVA



leeds city region  
intelligence driving growth

# LCR Forerunner Pilot: Devolution



The Scottish Parliament  
Pàrlamaid na h-Alba

Scotland (primary legislative powers)



Llywodraeth Cynulliad Cymru  
Welsh Assembly Government

Wales (secondary legislative powers)

---

**LONDON**

Greater London Authority (executive and administrative powers)



leeds city region  
intelligence driving growth



Pilot City Regions: Leeds, Greater Manchester (some executive and administrative powers)

---

*Up a league*

Local authorities

leeds city region  
intelligence driving growth

# Ministerial Summit London Nov 2009



leeds city region  
intelligence driving growth

# The Pilot Programme

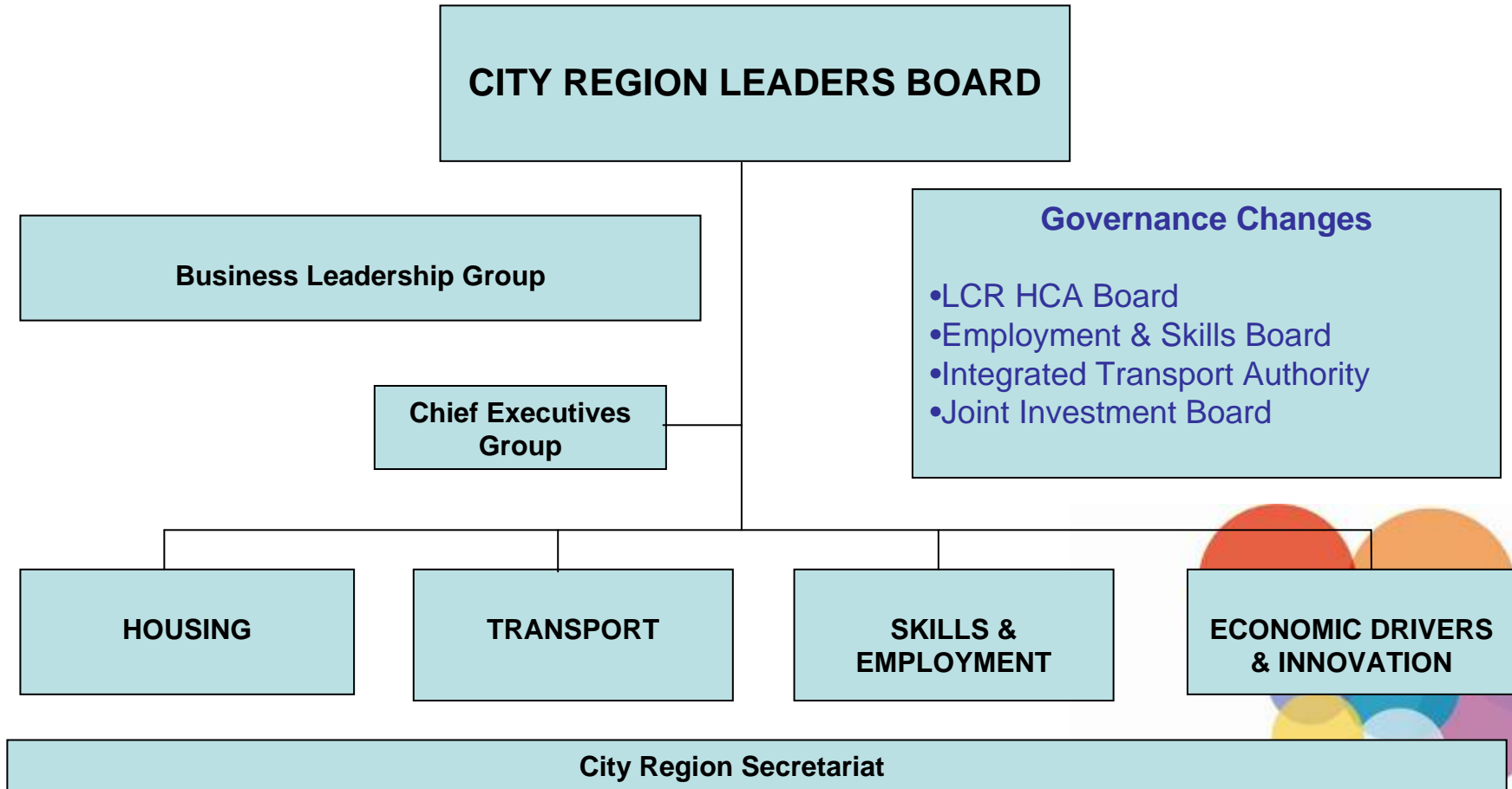
## Agreed with Treasury Nov 09

- The Partnership will **accelerate our recovery from the recession and strengthen our future global competitiveness.**
- Through the pilot, we will establish a sustainable model of **local economic leadership** to drive one of the North's most powerful engines of economic growth.



leeds city region  
intelligence driving growth

# Leeds City Region Partnership



# Forerunner Pilot: Employment & Skills Theme

**To provide the skills that business demands so that enterprises can grow and lead the economic recovery, we will ...**

- Establish an Employment and Skills Board to take on Section 4 powers
- Develop an Employment and Skills Strategy to shape funding related to employment and skills
- Work with Government to Improve Integration of Employment and Skills
- Progress a Sector Progression and Productivity Pilot



# Employment & Skills Board (ESB)

- Interim Board formed Dec 2009
- Full Board in place from April 2010
  - 6-9 Private sector employers including Chair
  - 1 Public sector employer
  - 5 Local authorities
  - Agencies in advisory capacity
    - Skills Funding Agency
    - Yorkshire Forward
    - Jobcentre Plus
- Seeking 'Section 4' Strategy Setting Powers from BIS May 2010

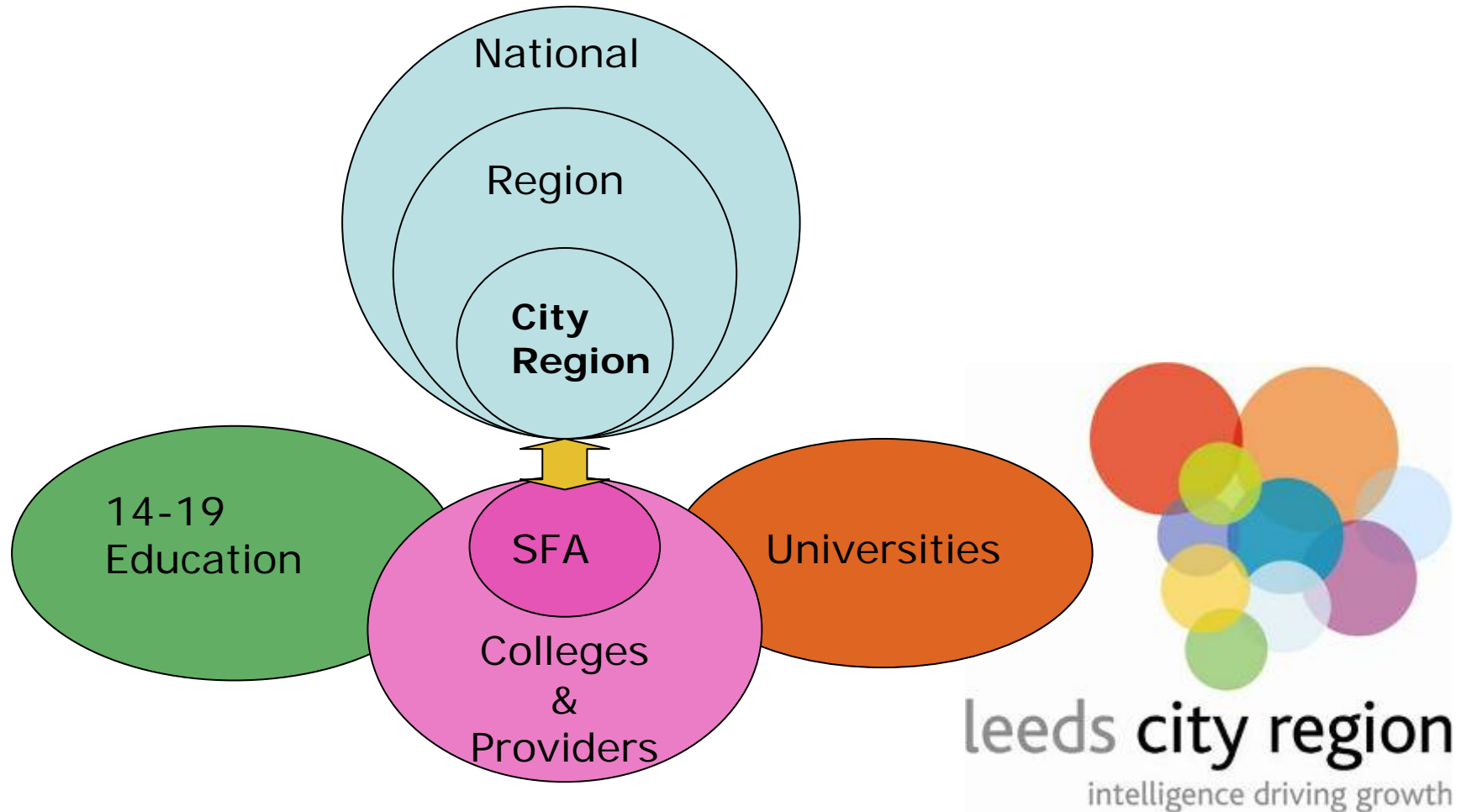


# Employment & Skills Strategy (19+)

- Drives the ESB's strategy-setting role
- Key to articulating Board's priorities & "gaining traction" with the system (SFA)
- Balance short and long-term issues
- May seek freedoms and flexibilities from government
- Must reflect employers' viewpoints on future skills and employment needs e.g.
  - Sector mix
  - Generic skills
  - Levels/qualifications
  - Replacement jobs
  - Economic growth
  - New opportunities



# Strategic Influence on Skills System



# Strategy Consultation

- Shared Intelligence – Consultancy Support
- Evidence base – see website
- Consultations with employer groups, key stakeholders and providers
- Board-level strategy development
- Strategy due by May 2010



leeds city region  
intelligence driving growth

# Future Communications

- Links with Local ESBs/WSBs
- Association of Colleges
- WYLLN and partners
- Board to consider:
  - Structure/task groups
  - Communications programme  
e.g. round table/workshop events  
and web-updates



# Today's Opportunity: Raise Your Voice...

- Round table discussion groups
- Opportunity to feed in your views
- Paul Gallagher, Shared Intelligence, to facilitate



# Contact Details

[sue.cooke@leeds.gov.uk](mailto:sue.cooke@leeds.gov.uk)

Team office tel: 0113 247 4725

[www.leedscityregion.gov.uk](http://www.leedscityregion.gov.uk)

