

The Future

WYLLN Priorities for the Fourth
Year

WYLLN achievements

Measure	2010 Target	2007/8 Actual	2008/9 Actual	Current
Progression agreements in place	25	0	58	83
Number of vocational and work-based learners progressing	3000	132	1306	2395
Foundation degrees (or new programmes) developed	21	4	26	26
Number of learners supported (IAG)	7500	2439	6517	8278
No of staff developed	500	336	819	1069
No of people supported through the ECIF programme	1000	n/a	n/a	564

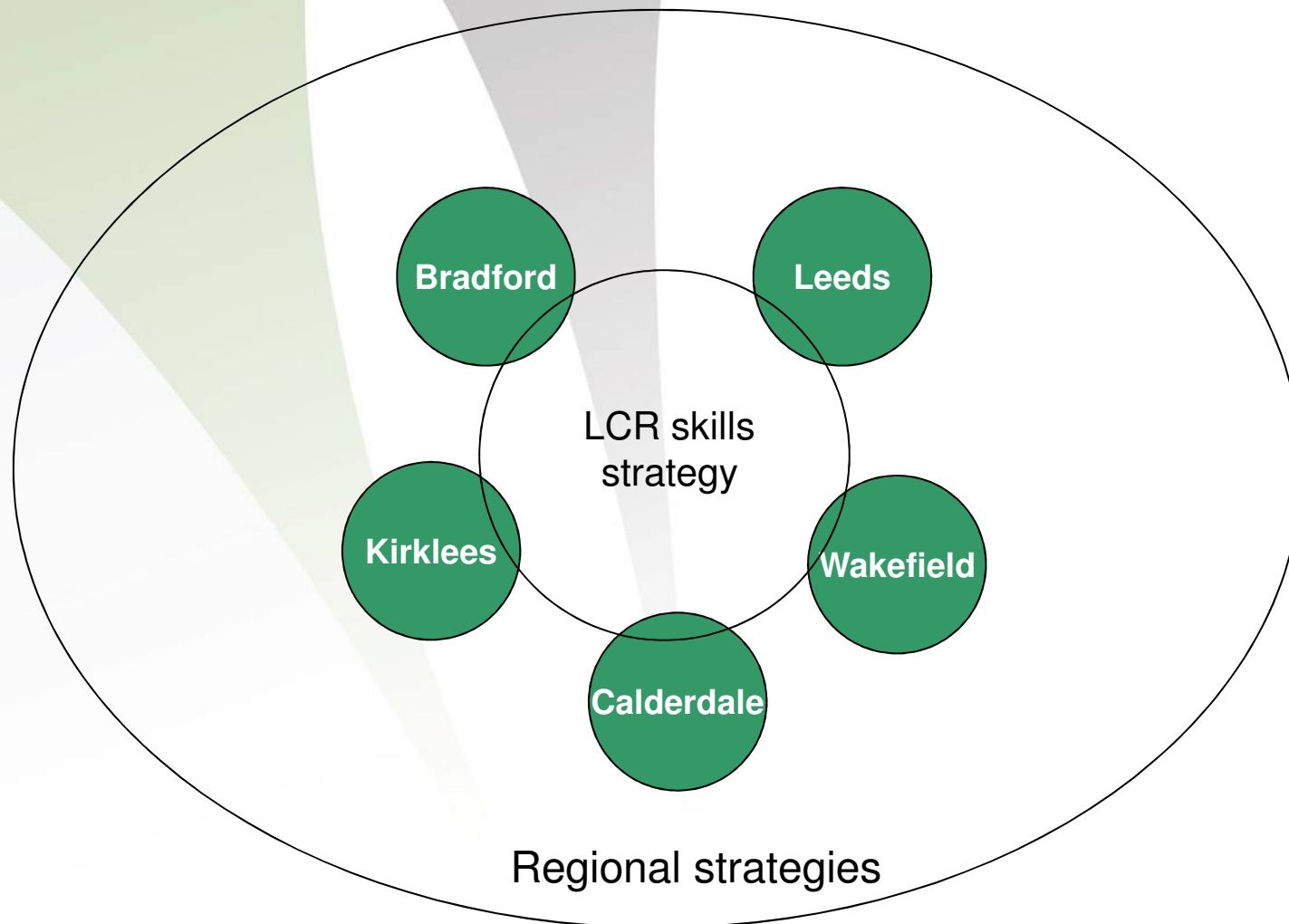
Guiding principles for a fourth year

- Maintain the partnership to provide progression and choice for work-based and vocational learners
- Provide a strategic gateway to providers of higher education in relation to the higher level skills agenda

Further development of the WY Progression Agreement Framework

- Multi-entry and multi-exit agreements
- Diploma progression agreements
- Level 2 to 3 progression agreements
- A level progression
- Pre to post 16 progression

Linking HLS Provision to Skills Strategies



HLS Co-ordinator Targets

- Employer progression agreements
- Employer based training and accreditation (EBTA) initiatives
- Employers engaged

Emerging developments

- Identifying key 'key accounts'
- New Centres of Excellence developed by companies for companies with providers
- Rolling out the British Chamber of Commerce FD Leadership and Management
- Referrals to the Economic Challenge Investment Fund
- Creative use of credit

Sectors

- Construction and the Built Environment
- Leadership, Management, Innovation and Enterprise
- Health Social Care and Early Years
- Culture, Media, Sports and the Arts; Leisure, Hospitality and Tourism

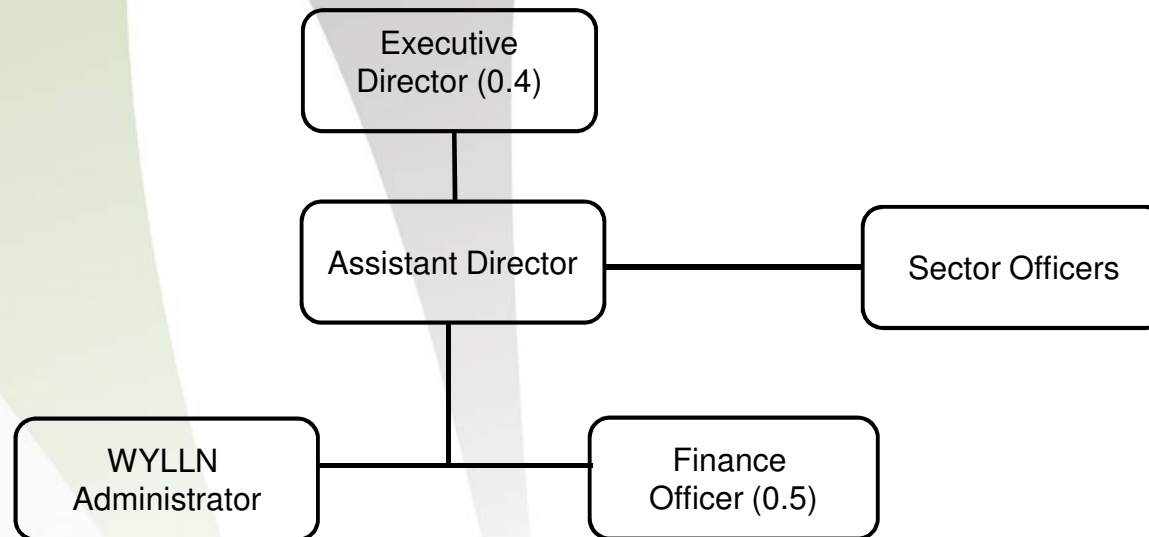
Sector Activity

- Flexible provision and frameworks
- Employer-led developments
- Flexible use of credit
- EBTA
- New qualifications for new progression pathways
- Focus for joint developments

A West Yorkshire Offer for Employers

- Using XCRi to standardise course information
- Creating a portal for a West Yorkshire offer

WYLLN 4th Year Structure



4th Year Targets

Outcomes	Target
Additional diploma progression agreements	10
Additional multi exit/entry progression agreements	10
Additional employer progression agreements	5
Additional learners supported through the new progression agreements	400
Additional learners progressing	150